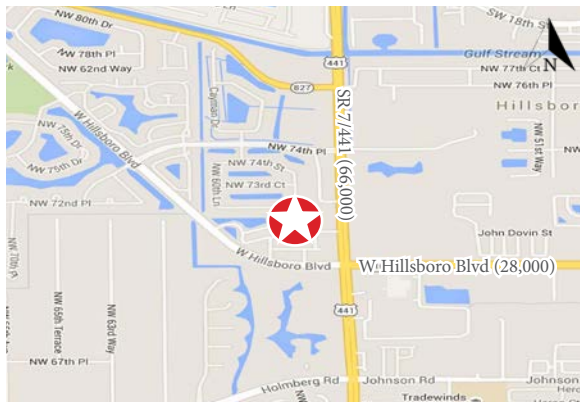


# Shoppes of Parkland

5901 W Hillsboro Blvd, Parkland, FL 33067



## Project Highlights

- Community shopping center anchored by the top ranked BJ's Wholesale Club in South Florida
- Excellent location at the NWC of Hillsboro Blvd and State Road 7 with immediate visibility to a combined traffic count of nearly 56,000 vehicles per day
- Serves a population of nearly 300,000 residents within a 5 mile radius with an average household income of over \$82,000
- One vacancy at 1,600 SF is available

## PHYSICAL SITE CHARACTERISTICS

Daily Traffic Counts:	W Hillsborough Blvd (E/W): 57,997 AADT
GLA:	145,652
Lat/Lon:	26.319334/-80.205069
County:	Broward

## DEMOGRAPHICS (2019)

	1 MILE	3 MILES	5 MILES
Population:	13,671	112,418	310,825
Avg. HH Income:	\$127,204	\$100,303	\$93,850



## For Leasing Information

Lynda Nagy, Regional Vice President  
561.961.9958 | lnagy@retailsolutionsadvisors.com



The information contained herein has been obtained from sources deemed reliable but has not been verified and no guarantee, warranty or representation, either express or implied, is made with respect to such information. Terms of sale or lease and availability are subject to change or withdrawal without notice.

# Shoppes of Parkland

5901 W Hillsboro Blvd, Parkland, FL 33067



Professionally Owned by:

**NEW MARKET**  
www.newmarketprop.com

Unit	Tenant	SF
AOA	Oxford Academy at Parkland	6,800
AOD	NN Dentistry	2,000
AOE	Corporate Caterers	2,468
AOJ	Dollar Tree	8,800
AOM	Body Tek	2,400
AOR	Diamond Nails and Spa	1,600
BOA	BJ's Wholesale Club	108,532
COA	MOD Pizza	2,400
COB	T-Mobile	1,200
COC	Bagels with Deli	2,160
COD	Starbucks	1,600
COE	Puppies Plus	2,160
<b>COG</b>	<b>AVAILABLE</b>	<b>1,600</b>
COH	Jersey Mike's Subs	2,000



**Lynda Nagy**  
Retail Solutions Advisors  
3730 Cleveland Heights Blvd | Suite 2 | Lakeland, FL 33803  
863.646.4567 (o) | 561.961.9958 (m)  
[RetailSolutionsAdvisors.com](http://RetailSolutionsAdvisors.com)

**RETAIL SOLUTIONS ADVISORS**  
UNDER PROMISE. OVERPERFORM.